



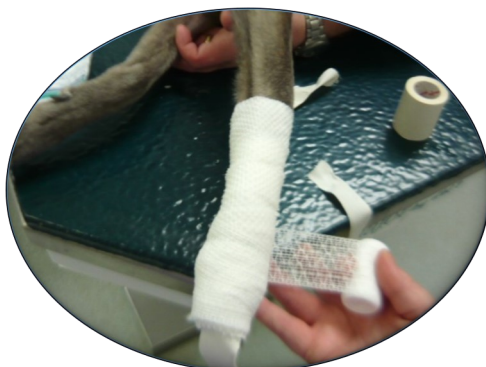
## + PET FIRST AID + HOW TO APPLY A BANDAGE

1. Place a stirrup of white tape on the skin hanging below the foot. This will help to keep the bandage from slipping.



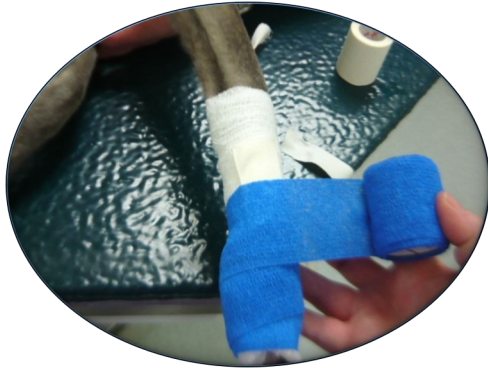
2. Apply a non-stick Telfa pad to any wounds or sutured areas.

3. Wrap roll cotton around the leg to either immobilize affected joints or to cover any wounds. Always roll the cotton away from the leg to help prevent the bandage from being too tight. Always start distally (towards the toes) and work your way more proximally up the leg (this aids in circulation). Any layers of cotton should be smooth as wrinkles can cause pressure on the limb, leading to sores.



4. Wrap stretch gauze around the leg (as described in step #3) with the roll cotton.

5. If you have used a stirrup, fold the loose end up and secure it to the bandage.



6. Wrap Vetwrap as you did with roll cotton and stretch gauze. It is always best to unroll the Vetwrap and then re-roll it prior to using it in your bandage. This helps to loosen the Vetwrap and helps to prevent your bandage from being too tight.

7. Secure the bandage at the top with some white tape or Elasticon.



8. Try to leave the middle two toes exposed when applying a bandage so you can monitor them for swelling. Toes becoming swollen or cool to the touch would indicate that your bandage is too tight and needs to be removed right away.

9. Monitor the bandage closely to ensure that it stays clean and dry. You should change the bandage if it becomes soiled as any moisture trapped under a bandage can lead to infection. If any questions, concerns, or evidence of swelling or pressure sores develop, recheck with Leesburg Veterinary Hospital right away.

10. You can use a Ziploc bag to cover and protect the bandage when your pet is outside to help keep the bandage clean and dry.